



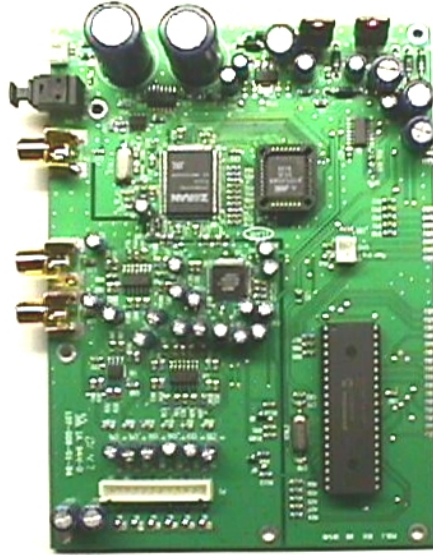
Preliminary Product Definition

# PCD 5.1

Subassembly

OEM Series

Dolby Digital Surround Sound Processor System



Main Processor PCB



Keyboard/display PCB

### Key Features

- Dolby Digital 5.1 , Dolby Pro Logic Surround decoding
- Processing modes include Movie, Music , Stereo, Dolby Digital/Dolby Pro Logic, and advanced bass management
- Remote control and asynchronous serial I/O option ( i.e USB control upgrade option )
- Automatic audio input detection selects processing modes
- 96KHz / 24 bit audio
- 3 audio inputs ( 1 optical , 1 coaxial , 1 stereo analog )

### Processing Modes

*Dolby Modes*  
 Dolby Digital  
 Dolby D Pro Logic  
 Dolby D 3 Stereo  
 Dolby D Phantom  
 Dolby D Stereo  
 Dolby Pro Logic  
 Dolby 3 Stereo  
 Dolby Phantom C

*Music Modes*  
 Stereo Analog  
 Stereo  
 Analog Blast

### High Performance

The PCD 5.1 is a high performance digital and analog audio processor. Incorporating the latest in advanced technology it rivals professional grade processors in performance and features.

### Quality and Reliability

Careful attention to design, high quality components, and our renowned quality production standards yield excellent value and reliability.

### User Friendly

Nearly all controls are automatically set by the processor based upon the audio input. Simply connect the audio input , amplifier/speakers and AC , and your PCD 5.1 is ready to play.

# PCD 5.1 Specifications

## Technical Specifications

### Preamplifier/Processor

Audio Sampling Rates: 32, 44.1, 48 , 96 k samples/second  
Frequency Response: 20Hz - 20kHz +/-0.1dB  
THD+N: Less than 0.003% , 20Hz - 20kHz  
Signal to Noise Ratio : -100dB  
Noise Floor : -125dB  
Dynamic Range: 100dB  
Output Level Adjustment: -127dB to 0dB in 0.5dB or 2dB steps  
Crosstalk: -100dB @ 1kHz

### Input Formats:

Dolby Digital (AC-3) in IEC 1937 format ( formerly IEC 958 Annex B) as specified in ATSC A/52 Annex B  
PCM in AES/EBU format.  
MPEG1 and MPEG2  
Analog Inputs  
Un-balanced stereo RCA , 24 bit ADC , 2Vrms full scale

### Analog Audio Outputs

6 channel  
24 bit DACs  
Crossover Points:  
Satellites: 200Hz  
Subwoofer: 200Hz



ISO9002



## Technical Specifications

### Power Requirements

Processor: +/-12VDC,+ 5VDC, 20W maximum , internal  
Amplifier: 90-264 VAC, 50-60Hz , 300W maximum

### Operating Conditions

5-45 degrees Celsius , natural convection cooling  
0-90% relative humidity ( non-condensing)

### Regulatory Notices

Complies with FCC Part 15 , class A digital device  
UL listed for US and Canada